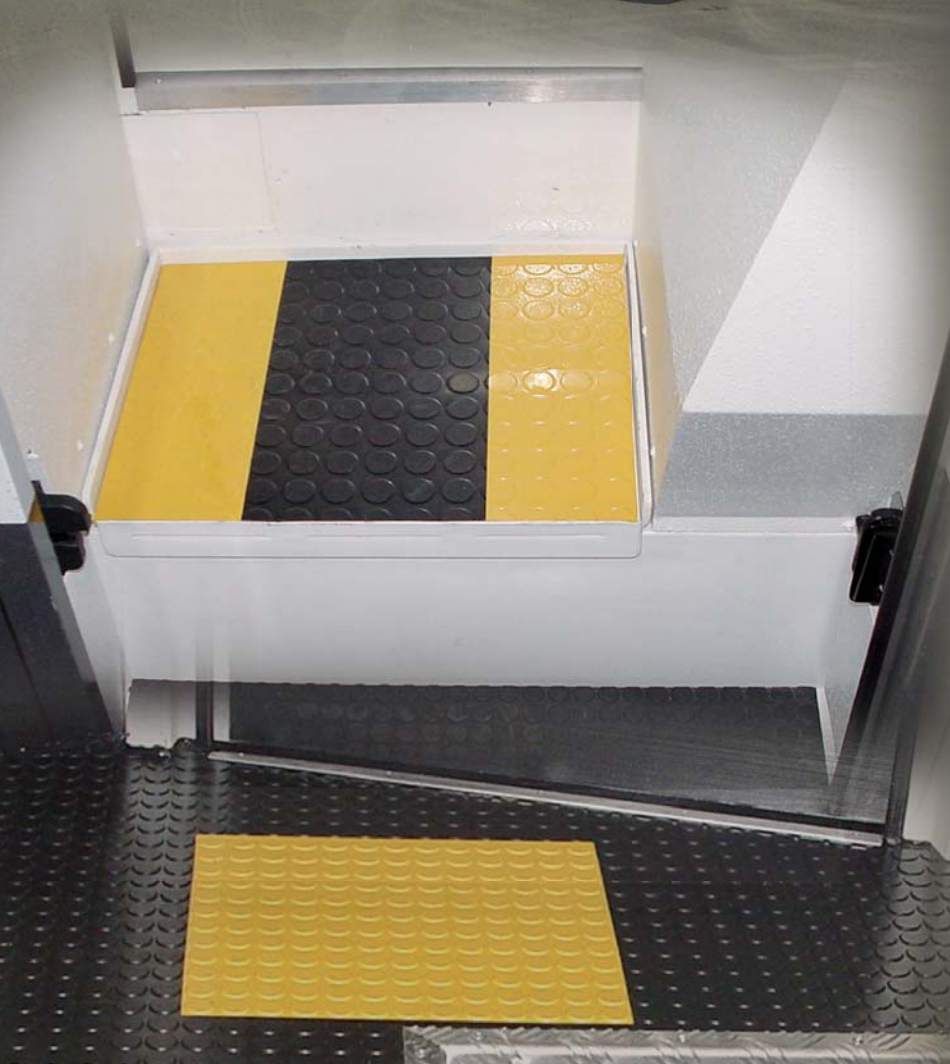


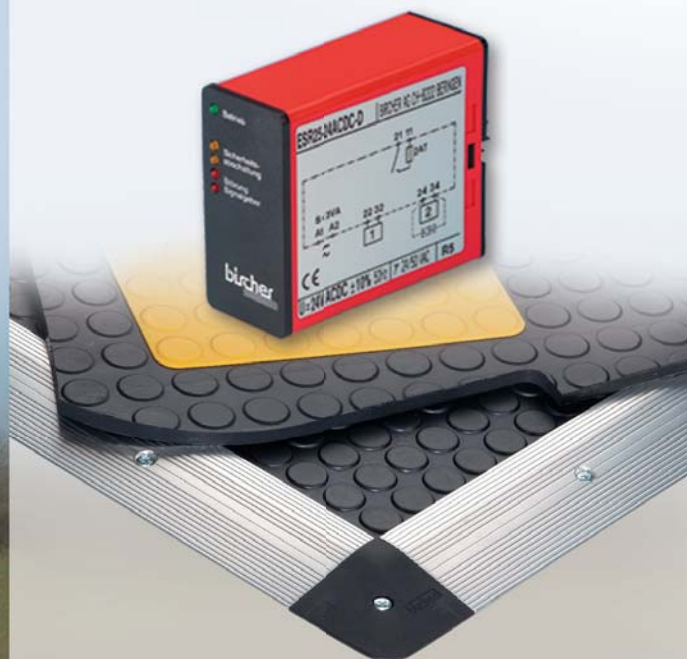
Applications

# Pressure Sensitive Safety Mat

for separating people in armoured cars



**BIRCHER REGLOMAT**  
sensing the future



## Application

- Locking mechanism for separating people in vehicles carrying money and valuables
- The pressure sensitive safety mat prevents more than one person from entering the vault section
- As soon as the authorized person steps on the yellow surface (inactive), the vehicle entry door is locked and the access door to the vault section is unlocked

## Product

- 2-zone pressure-sensitive safety mat
- Control unit ESR25

## Customer Benefits

- Tamper-proof safety zones
- Several sensing zones are definable and visually identifiable
- Customer-specific configurations are possible
- Mat is highly wear-resistant and weatherproof
- Resistant to commercial cleaning agents
- Maintenance-free

## Areas of Application

- Vehicles carrying money and valuables
- People-gating locks (separating mechanism)

### Bircher America Inc.

909 East Oakton Street  
Elk Grove Village, IL 60007  
USA

Phone +1 800 252 1272  
Fax +1 847 952 2005  
sales@bircherregloamat.com  
www.bircherregloamat.com